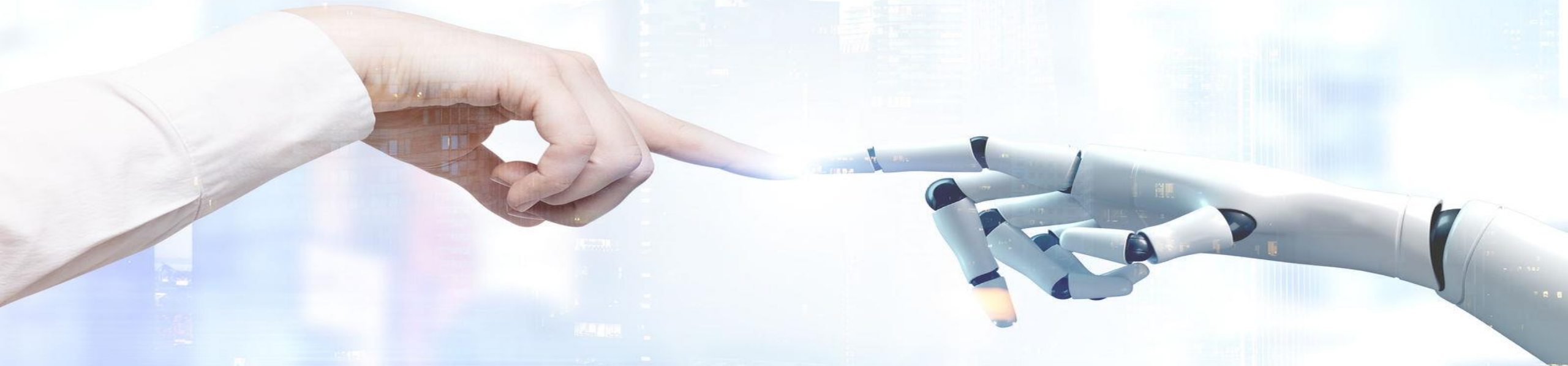
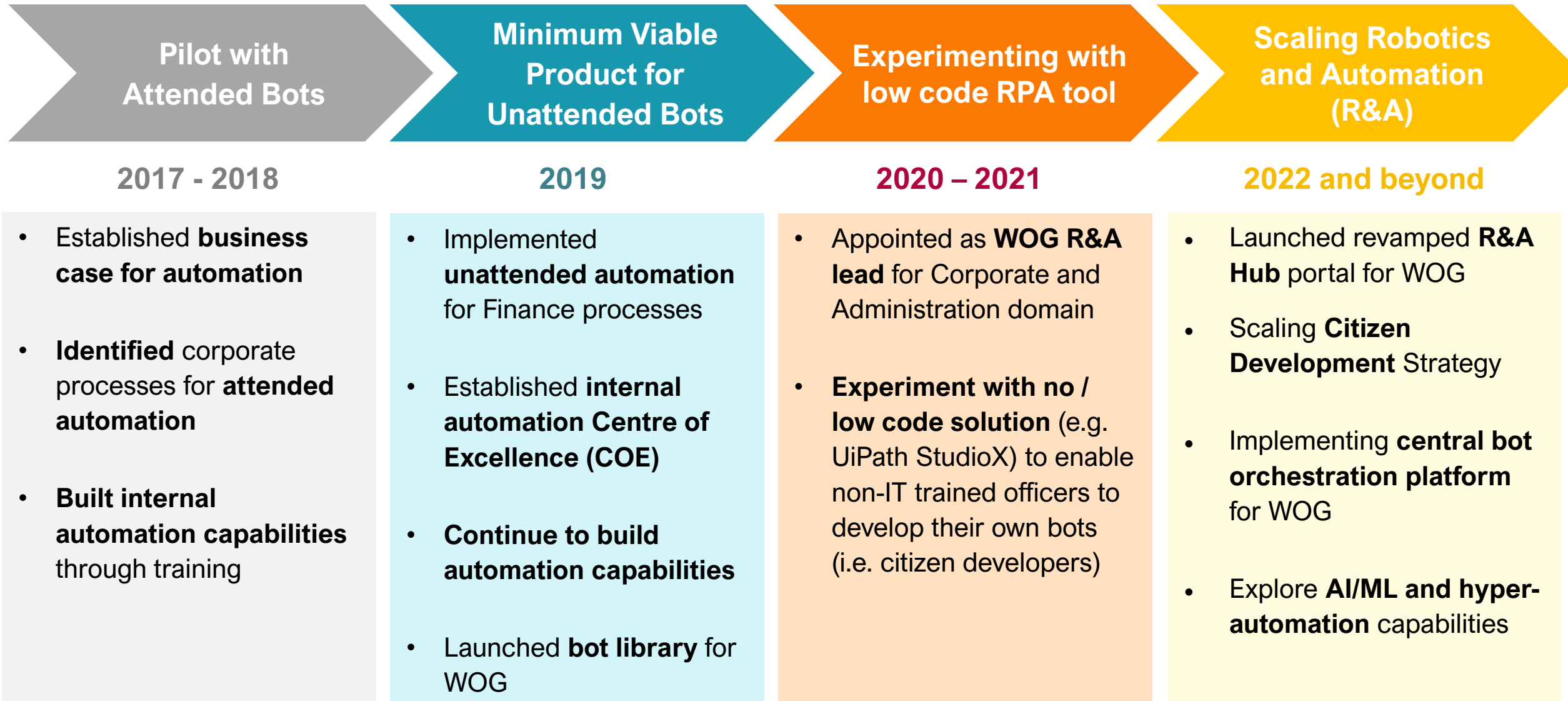


Leading Robotics and Automation for Corporate Services in Singapore Public Service



Jessica Ong, Deputy Director (Innovation Hub)
VITAL SHARED SERVICES, MINISTRY OF FINANCE
VITAL COP - Feb 2023

VITAL'S RPA JOURNEY



ACHIEVEMENTS TILL-DATE

Tangible Impact

107 Trained VITAL Officers*

46 Automated Processes / Tasks*

>12,000 Hours saved

~66% Efficiency gains

>30 Sharing Sessions

>1,500 Unique R&A Hub Visitors

Intangible Impact



WOG R&A Lead for Corporate and Admin Domain



Process improvements



Better data inputs quality and higher accuracy



Digitally-skilled workforce



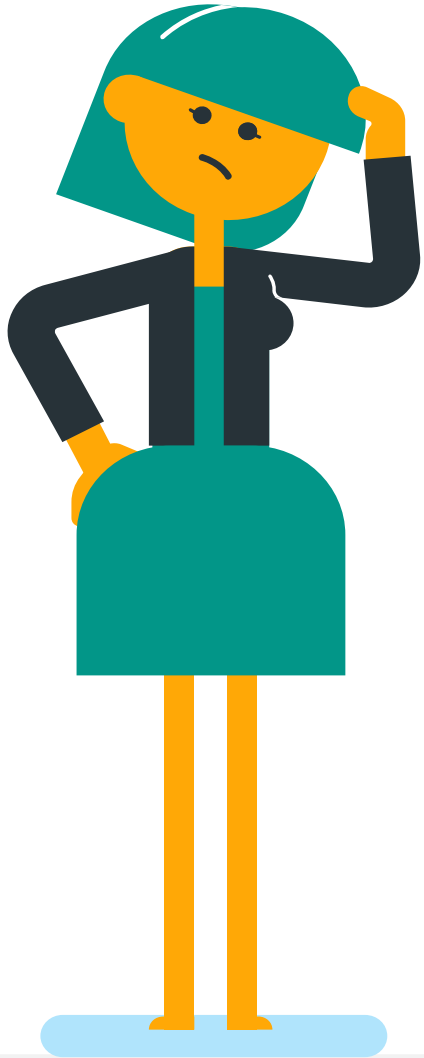
Higher value work



Better governance and control

* In-service Citizen and RPA developers

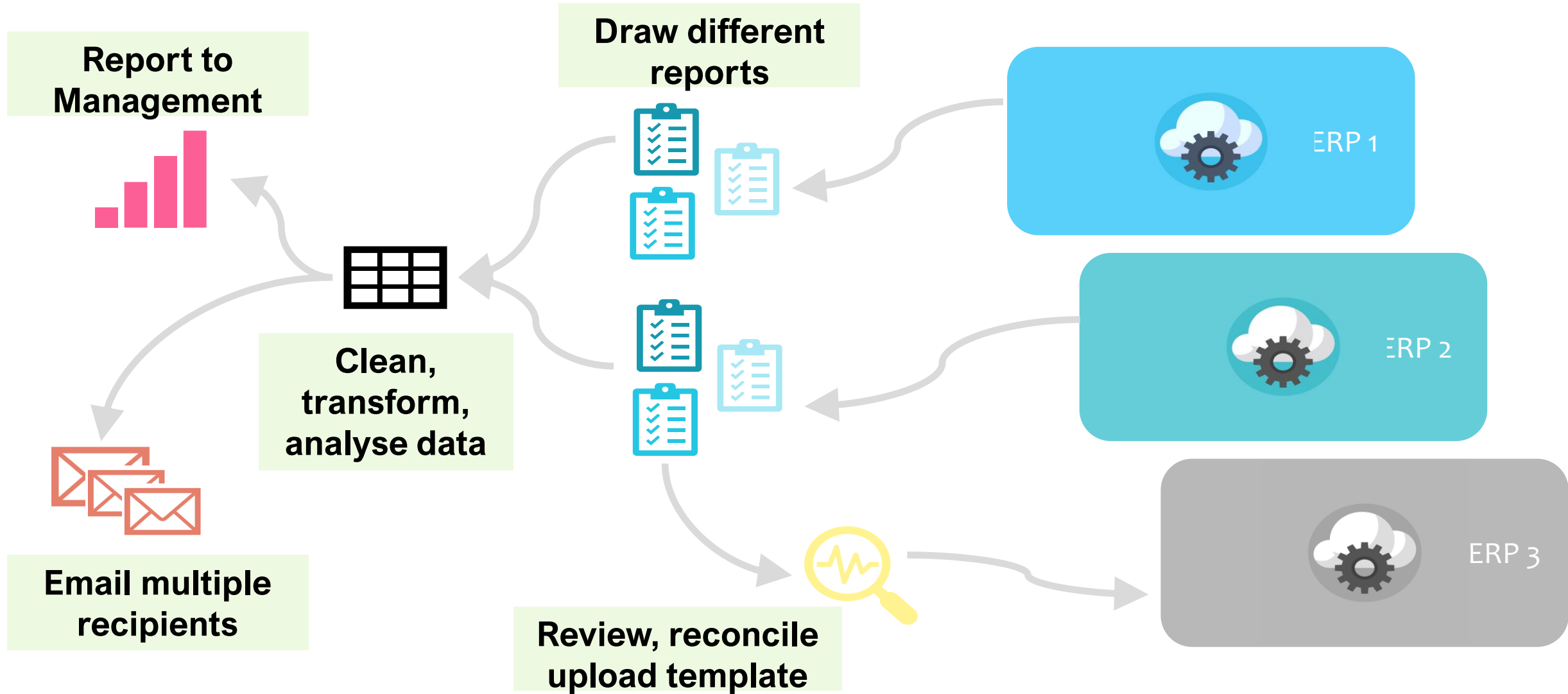
* 4 unattended processes and 42 attended processes where 14 are Common RPA Scripts shared in VITAL's Bot Library



GETTING STARTED ON RPA

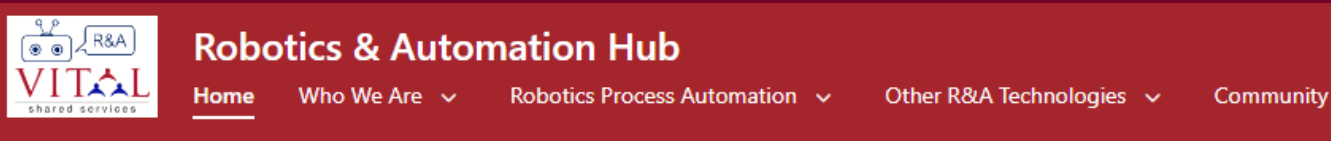
- Do I have a business case for using RPA?
- How do I identify processes suitable for RPA?
- What's next after identifying the process?
- How can I train officers in RPA to automate the process?
- What software can I buy and how do I buy it?
- How do I settle GSIB whitelisting and other security needs to install the RPA software on officers' laptop?

ARE YOUR TEAMS EXPERIENCING THESE?



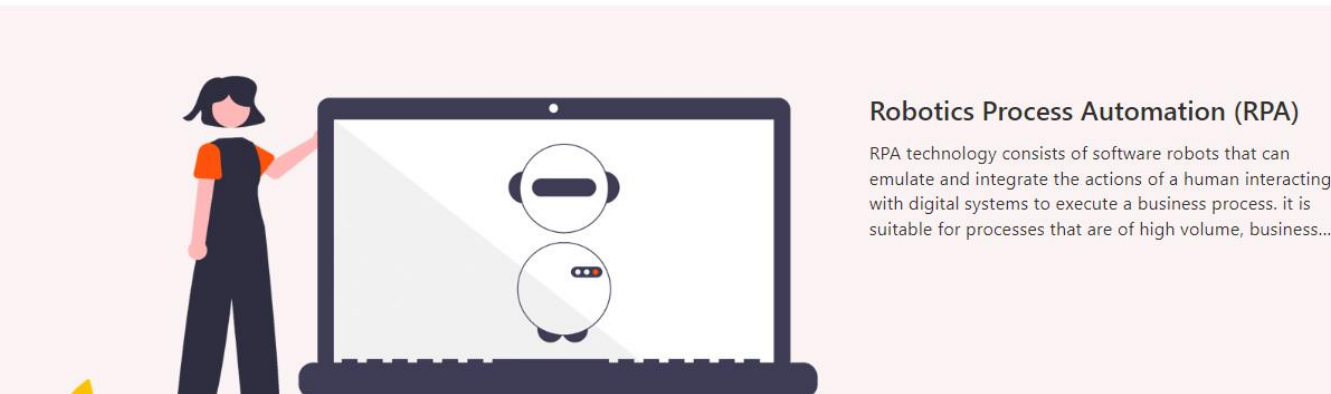
VITAL'S ROBOTICS AND AUTOMATION HUB FOR GOVT AGENCIES

Providing easy access to RPA resources and best practices to help officers to kickstart their RPA journey

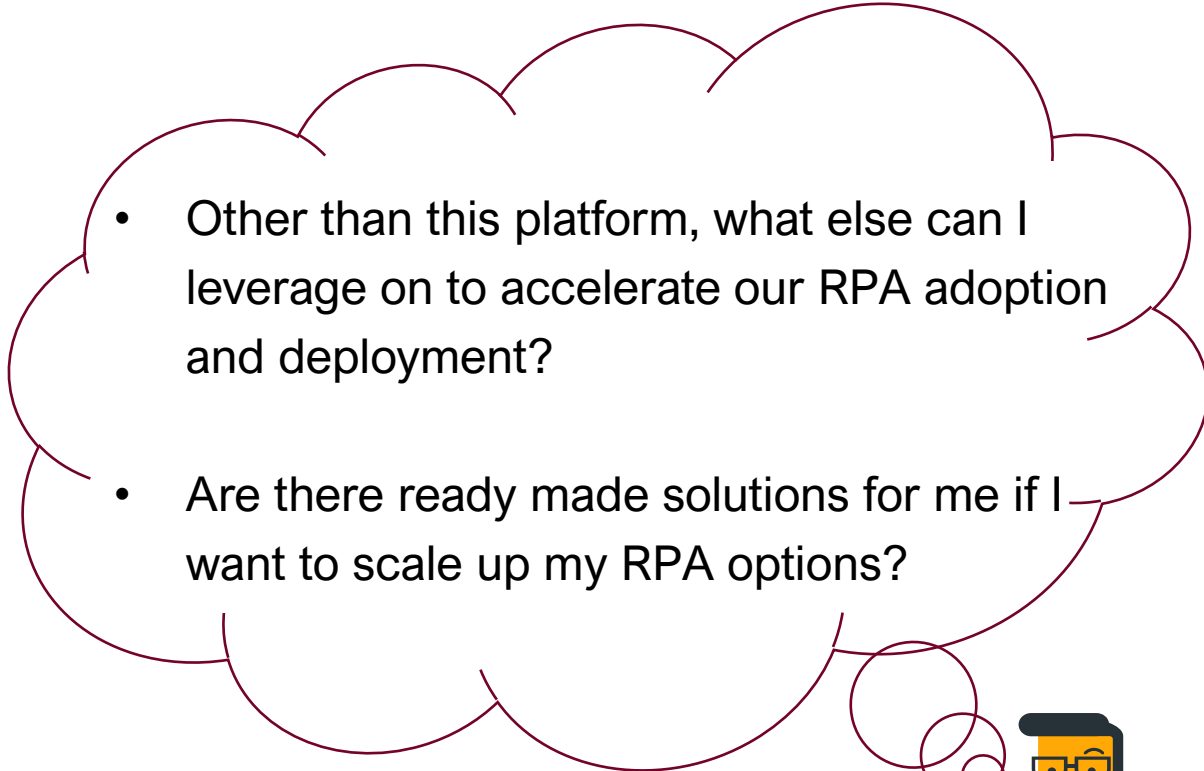


Announcements

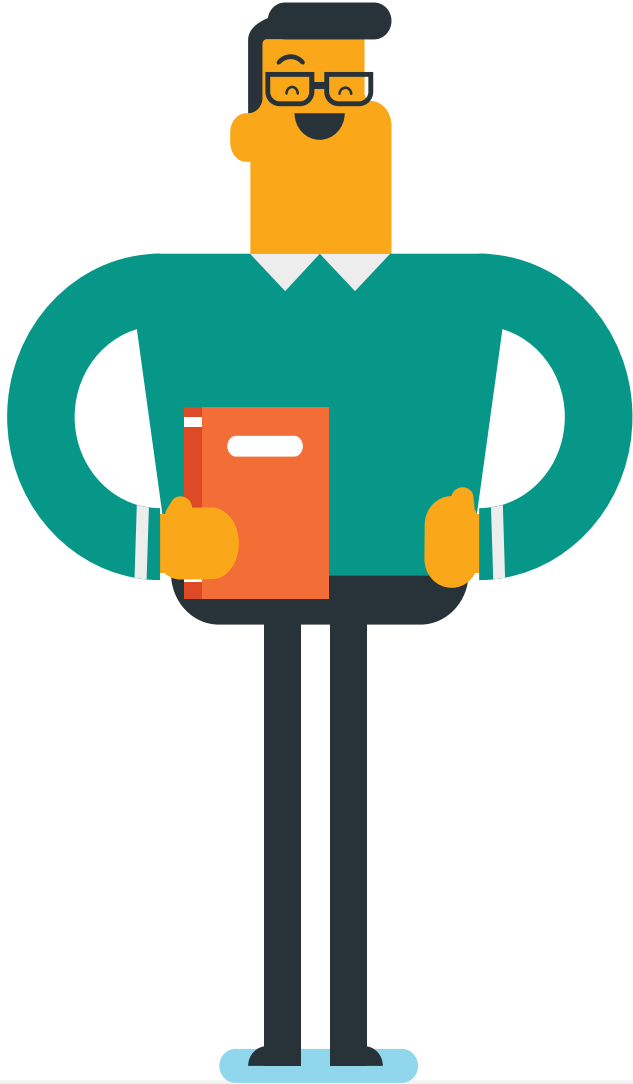
Announcement	Modified
VITAL has completed and shared a new RPA script: Exporting and emailing certificates . This is a common task and is typically applicable in HR domain. (For more info: R&A Hub Scripts Page)	August 11
GSIB Whitelisting Guide document for UiPath is now available under RPA Resources & Guides Page	August 11



<https://gccprod.sharepoint.com/sites/VITAL-AutomationHub>



GAINING CONFIDENCE ON RPA



- What's next after my successful pilot?
- How do I identify more use cases for automation?
- How do I scale up my RPA deployment with proper oversights?
- How do I enhance my current RPA setup to support this ambition while ensuring it will comply with central WOG directives and requirements?
- What would be the cost, efforts and time needed for this transition and how do I justify this?
- How do I also maintain this enhanced setup moving forward?

ACCELERATING ON RPA



- What's next after establishing a RPA setup that can support bots deployment at scale?
- How do I advance towards intelligent and hyperautomation?
- What R&A tech can help to complement and accelerate my existing RPA process discovery and deployment?
- What setup requirements, cost and efforts is needed for the experimentation?
- What are the possible use cases for such trial and is there anyone I can learn from?

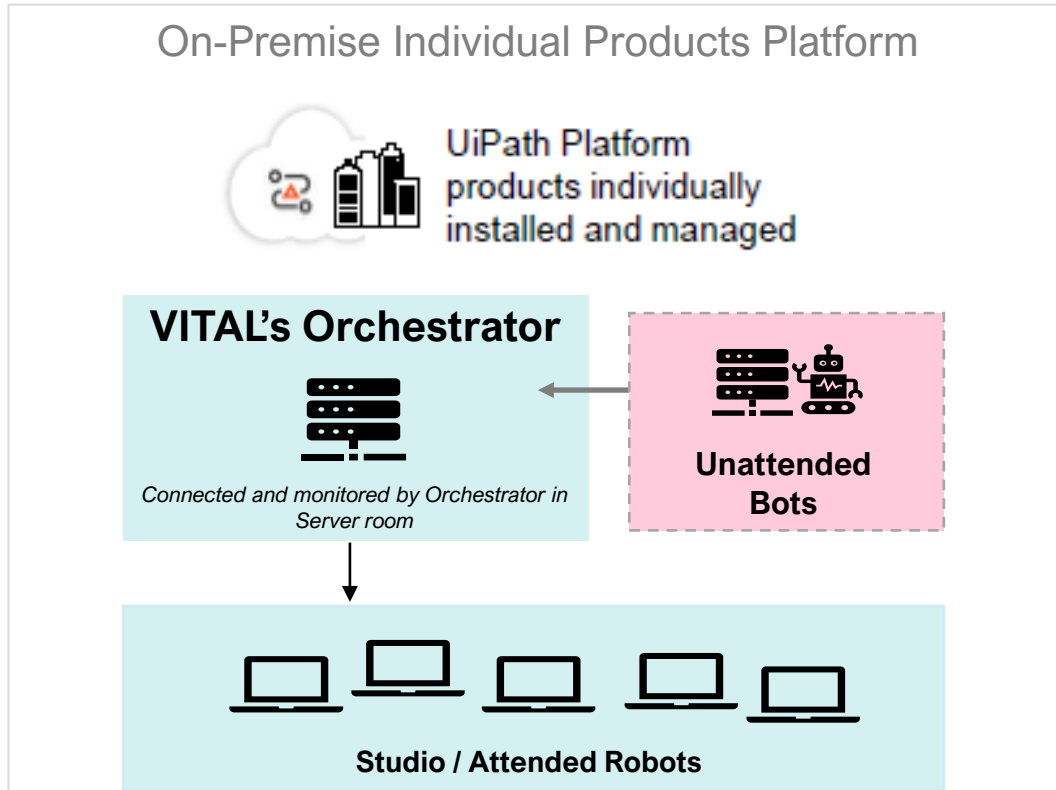


**Quick start up
Quick scale up**

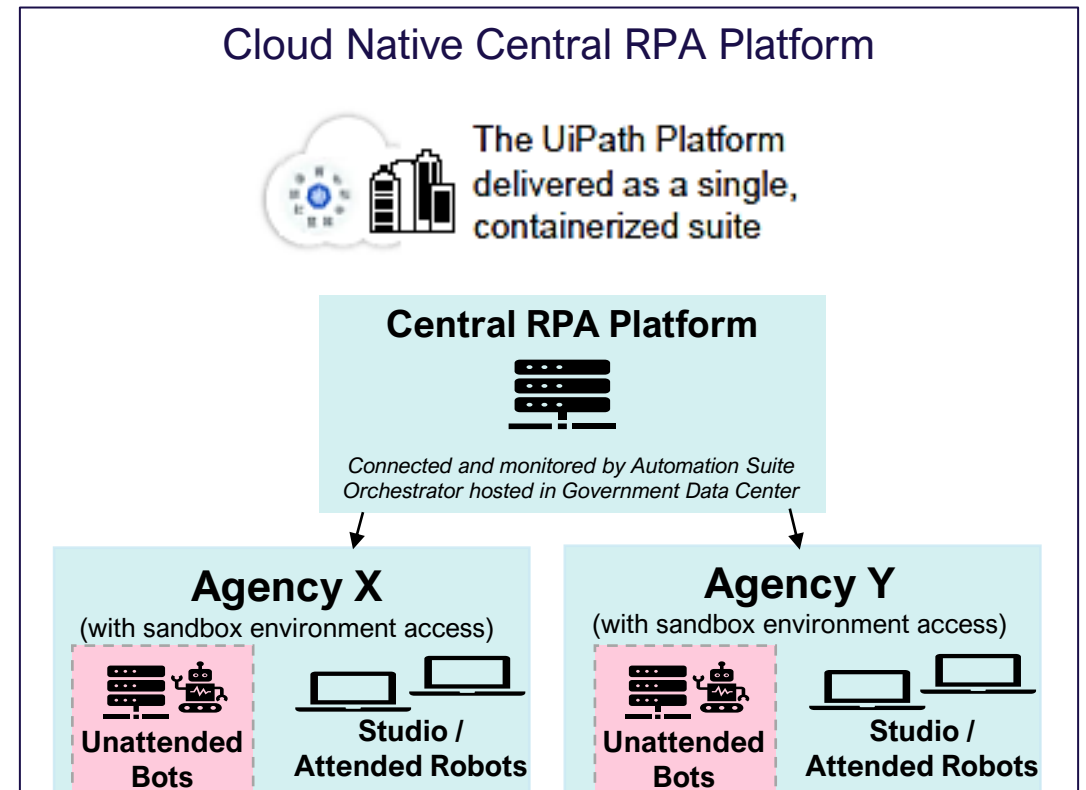
**so that I can fly high and
fast without worries!**

QUICK START UP AND SCALE UP WITH VITAL'S CENTRAL RPA PLATFORM FOR WOG

Current Mode of RPA Implementation at VITAL



Future Mode of RPA Implementation at VITAL

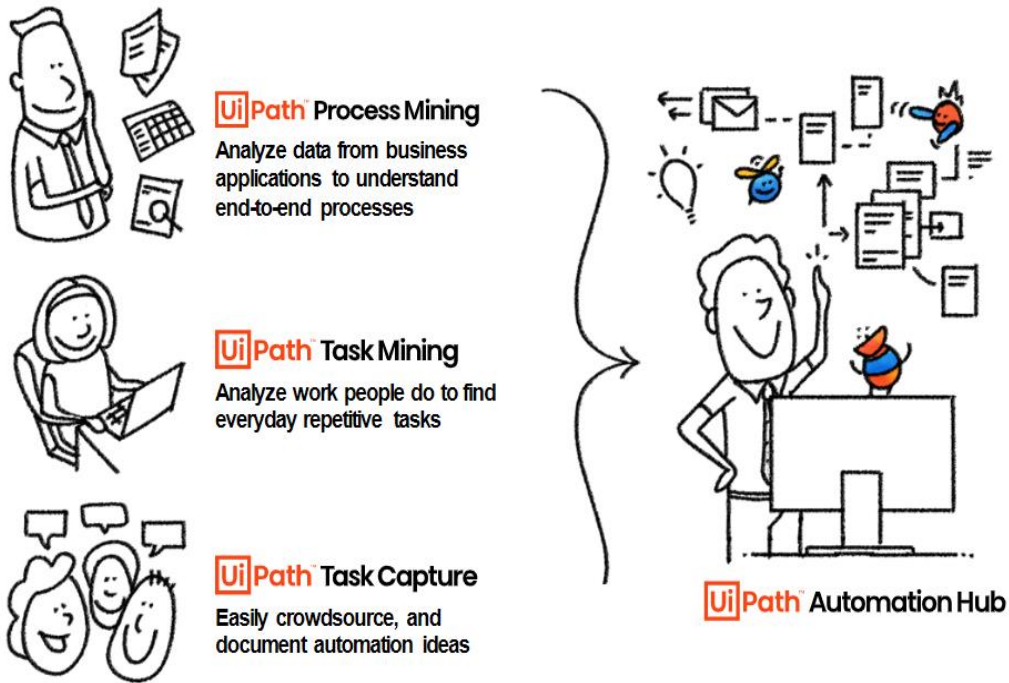


- Going beyond VITAL to facilitate adoption/scaling of automation in **Corporate Services** across WOG
 - Agencies can procure their Bot licenses and choose to manage them at central platform
 - Agencies can subscribe to VITAL's existing Bots (RPA-enabled corporate services) on central platform

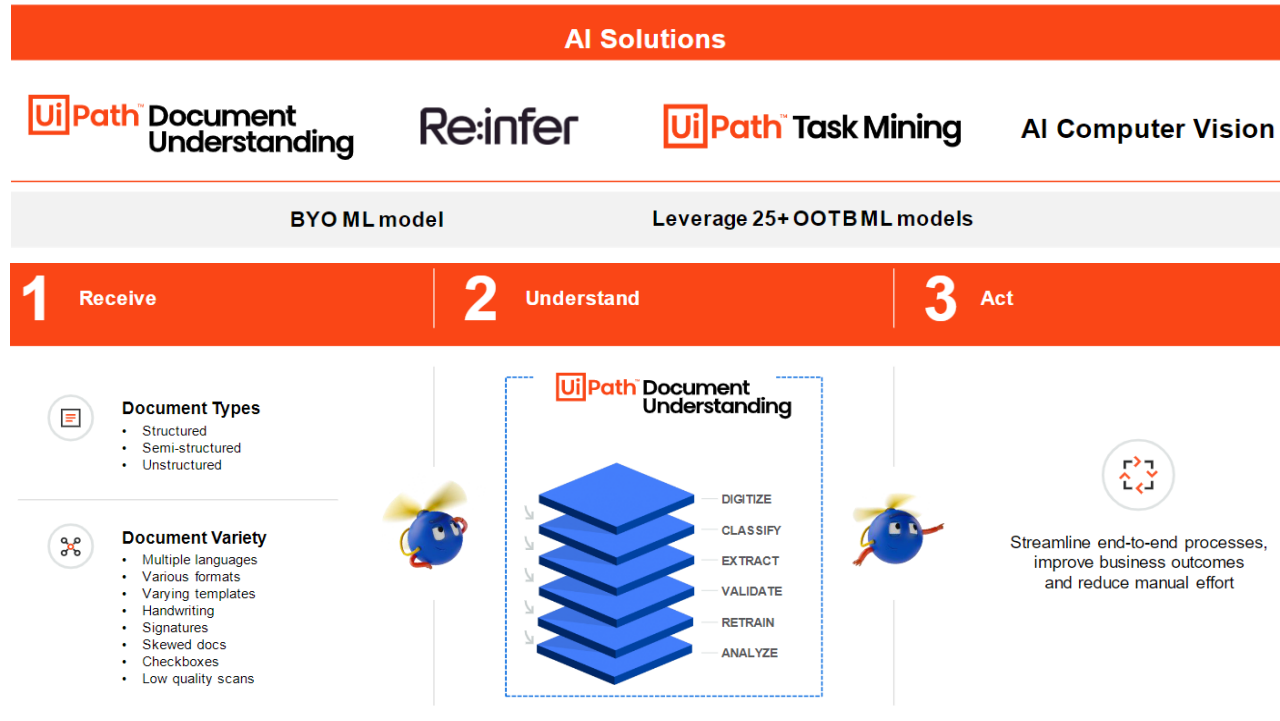
CAPABILITIES OF CENTRAL RPA PLATFORM (AUTOMATION SUITE)

Enable Agility and Tech Exploration

- Readily available sandbox environment will facilitate R&A tech exploration by enabling experimentation and upgrade to the latest and advanced products in agile manner



★
Accelerate Automations
Optimize Processes



Extracted from UiPath 2022.10 platform release sharing

CAPABILITIES OF CENTRAL RPA PLATFORM (AUTOMATION SUITE)



Ease in Scaling Up and Maintaining Setup

- Agencies need not setup their own RPA Infrastructure and orchestrator to better manage bots



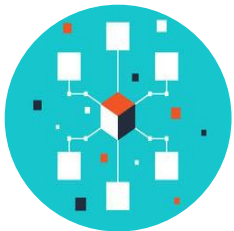
Enable Compatibility and Compliance

- Central deployment enhances objects recognition, enables browser/software components compatibility and compliance



Facilitate Consolidation and Monitoring

- Enable tracking and insights of Bots and utilisation for Corporate Services at agency and WoG level



Centralise Delivery of Corporate Shared Services

- Standardizing Bots and suite of common automation services enforces consistent delivery of shared services to agencies

WHAT'S NEXT

Share your thoughts and indicate interest

Launch of Platform for WOG



<https://go.gov.sg/botplatform23>

- VITAL will reach out to interested agencies to share more details and facilitate onboarding to the platform

THANK YOU

